



CCU-550 Quick reference guide

CCU-550 Modem Install

Setup

Insert installation CD (supplied with TSTT Wireless Broadband Modem) into the CD-ROM drive.

This will automatically start the installation and install the required drivers plus TSTT Wireless Broadband (CCU-550) Application software.

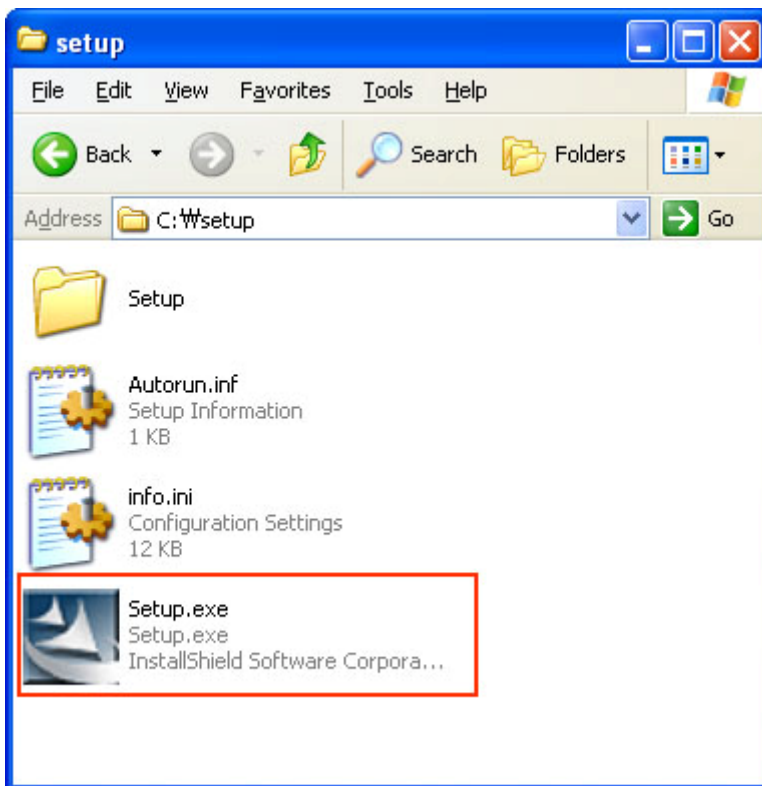
Do not connect TSTT Wireless Broadband Modem into your laptop/PC yet.

The installation procedures are for Windows 2000 and Windows XP.

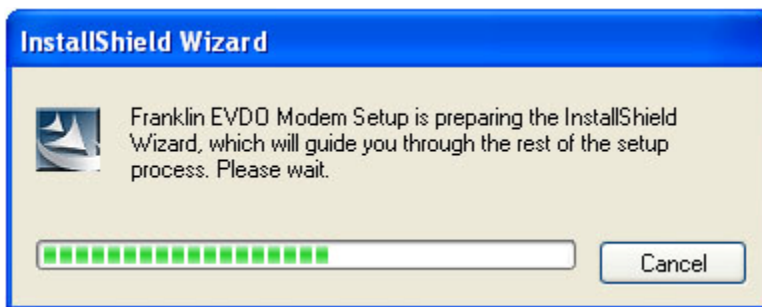
Start setup

If the auto run does not start after inserting the CD, please double-click on "Setup.exe" file on CD-ROM to start the installation.

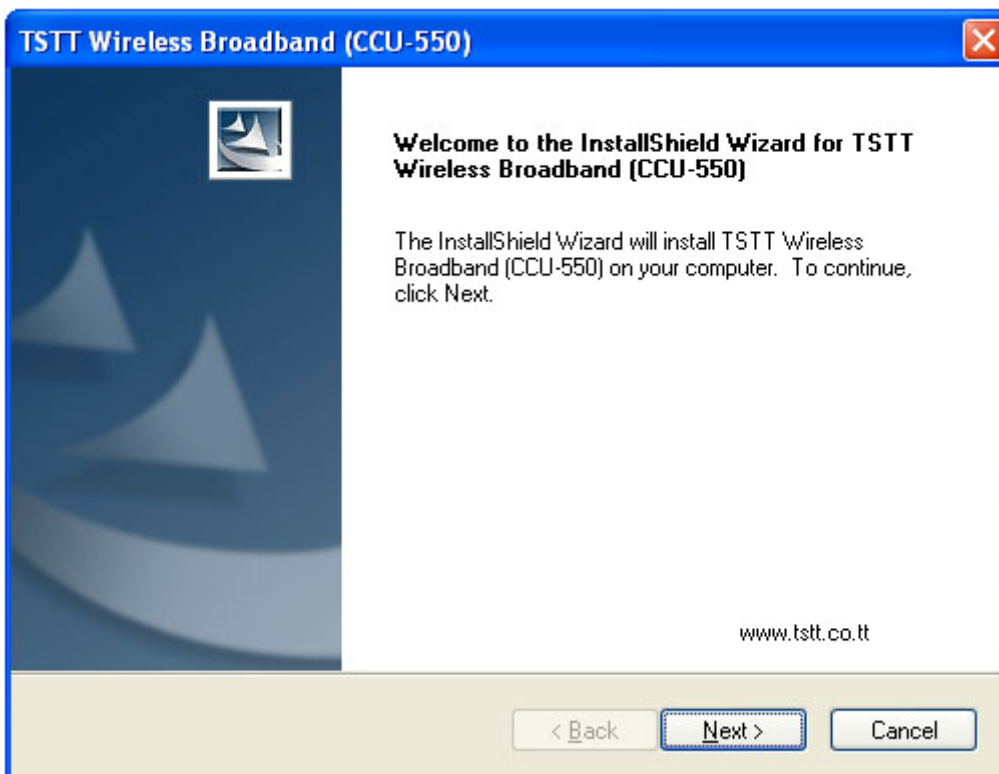
If you have already inserted your Modem into your PC, remove the Modem and double-click "Setup.exe"



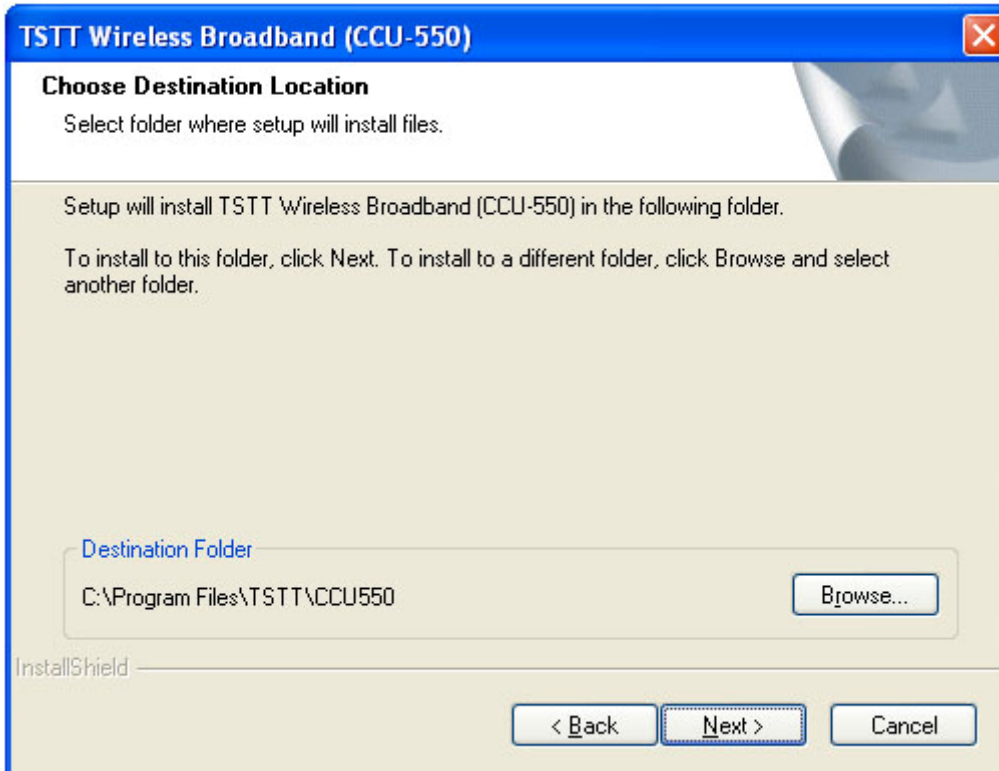
Start Auto Run



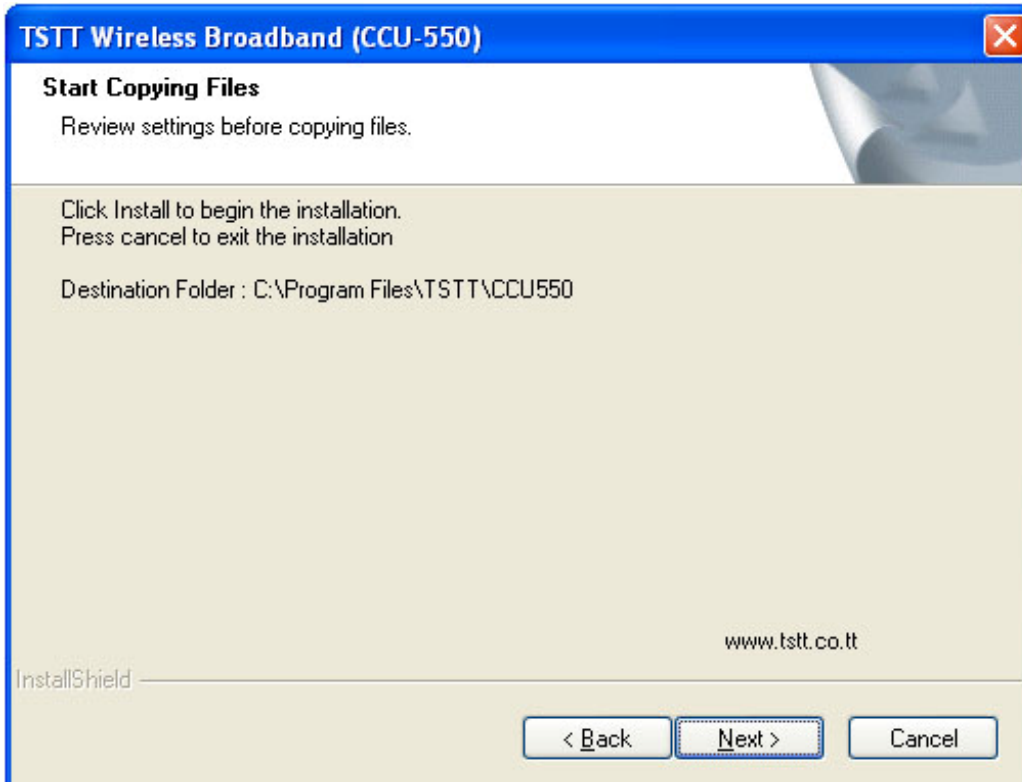
Install Shield Wizard... click 'next'



Choose the installation directory and click "Next" to continue.

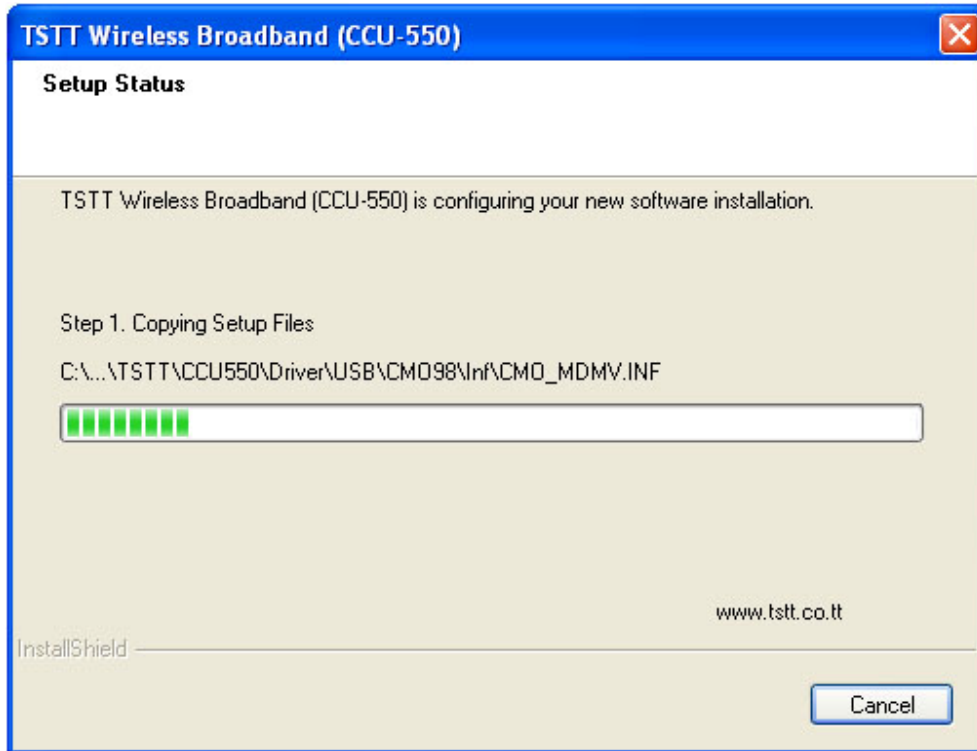


Click "Install" to continue.

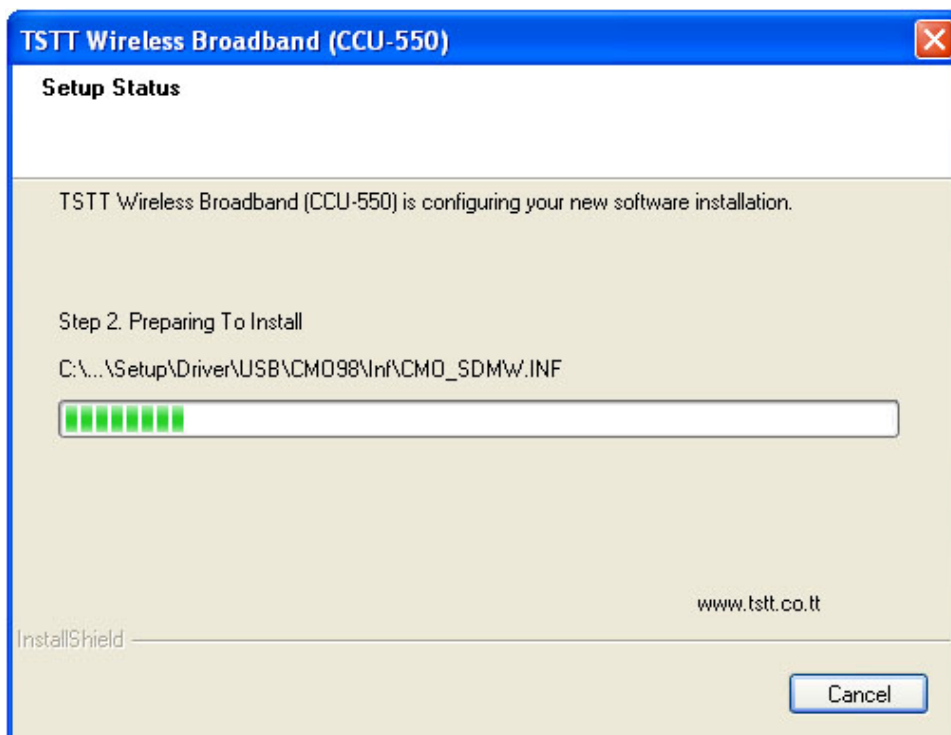


TSTT Wireless Broadband (CCU-550) is configuring your new software installation.

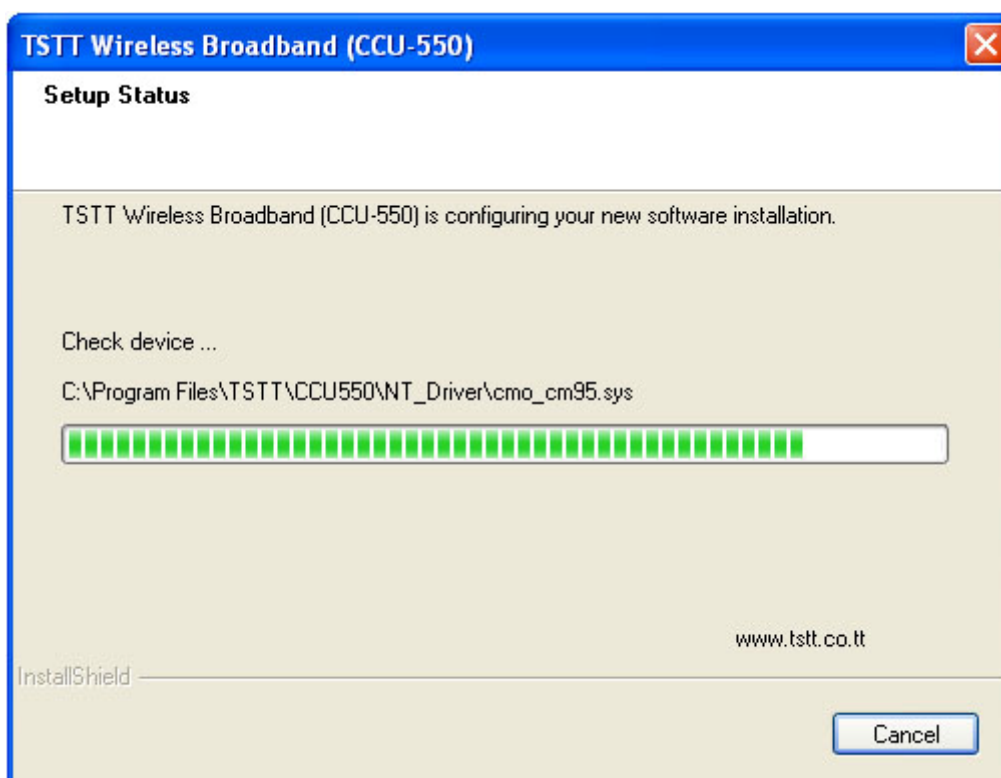
Copying Step1 File



Copying Step2 File



Check device



Installation Complete. Click “Finish” and remove the installation CD.

