



TSTT wireless broadband

LIVE IN A LIMITLESS WORLD



QUICK INSTALL INFORMATION

Congratulations!



On Selecting



It's time to experience evolution. Be online, on the go!

To access the EV-DO network and enjoy TSTT wireless broadband's capabilities you need:

- A laptop
- A wireless network card (provided in this kit)
- Installation CD (also provided in this kit) containing the software, drivers and User Guide

Please follow the installation procedure below. If you need configuration assistance please contact our Internet help desk at 824-TSTT option 5.

Installation Procedures!

Windows® 2000 and XP



Please Note

1. *Do NOT insert the Wireless PC Card into your PC Card slot before installing the MobiLink software*
2. *This card is not designed to function with Windows CE, nor in handhels and Pocket PCs*

Preparation

Please check that your laptop /notebook meets the following minimum requirements:

- Card Slots: Type II PC Card slot (Cardbus)
- Disk Drive: CD-ROM
- Memory: 32 MB
- Disk Space: 14 MB
- Processor: Pentium 150 MHz or higher

To experience



TSTT wireless broadband

LIVE IN A LIMITLESS WORLD

you need to follow these 3 procedures:



MobiLink Software Installation



Wireless PC Card Installation



Launch MobiLink



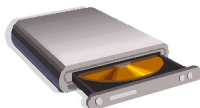


1

Installing the MobiLink Software

1. Close all Windows programs and insert the installation CD in your CD-ROM drive. The set-up program should launch automatically and a Welcome Window will appear.

*If the CD does not autorun, select **Start > Run** and enter **d:\autorun.exe** where “d” is your CD-Rom drive letter.*



2. Click **Next** on the MobiLink InstallShield Welcome Window.
3. Please read the Licensing Agreement carefully and click **I accept** to agree to the terms. Click **Next** to Continue.

4. Click **Install** to install the software. This may take several minutes.
5. Click **Finish** to exit the wizard. The MobiLink icon is placed on your desktop

Note: 

It is recommended that you restart your PC at this time before proceeding with the insertion of the Wireless PC Card..

2

Installing the Wireless PC Card

Note: 

Before inserting the Wireless PC Card into your PC Card slot, it is recommended that you remove the Installation CD from your CD-ROM drive.

1. Insert the Wireless PC Card into the PC Card slot with the label facing up

Warning: 

Once the card is inserted, DO NOT physically remove the Wireless PC Card until you have reviewed instructions for proper removal. Improper Wireless PC Card removal may cause serious damage to your notebook PC.

2. Once the card is properly inserted, your Windows operating systems will notify you that new hardware has been detected.

3

Launch MobiLink

1. **Double-click** the MobiLink icon.



2. Click **Connect** to connect to the Internet.

You are now ready to experience
TSTT wireless broadband access service,
powered by EV-DO.

For further assistance please contact our
Internet help desk at 824-TSTT option 5.



Telecommunications Services
of Trinidad and Tobago Limited



tstt.co.tt